

Toano Wild Horse Herd Area Pilot Valley, Nevada

On June 23, 2010, BLM issued a news release announcing their intent, in coordination with the Nevada Department of Agriculture, to remove and impound approximately 175 domestic estray horses found in Pilot Valley, Nevada, located north of West Wendover that are reported as *“believed to be released or stray and descendents of horses of local property owners”* and *“Over the years, the herds has grown in size and is causing considerable impacts to BLM managed lands.”*

Source: http://www.blm.gov/nv/st/en/fo/elko_field_office/blm_information/newsroom/2010/june/blm_to_impound_domestic.html

According to information supplied by Resource Concepts, Inc., *“Pilot Valley is located in eastern Elko County north of Interstate 80 and east of State Route 233 near the Nevada-Utah state line. Pilot Valley is situated between the Toano and Pilot Mountain Ranges. Pilot Creek flows through the valley, along with several small drainages originating in the mountains”* and, *“Pilot Valley is accessed by Pilot Valley Road from State Route 233 to the north or Interstate 80 to the south.”* Source: <http://www.rci-nv.com/reports/elko/section31.html>

In August 1993, the BLM Elko District Wells Resource Area Office in Elko, Nevada approved of a Wild Horse Amendment to the Wells Resource Management Plan.

Included within its framework was the decision to manage the entire Toano Herd Area located north of Interstate 80 and portions of the Goshute and Spruce-Pequop Herd Areas as “horse free” due to checkerboard patterns between public and private lands.

Also included in its determination was the need to install up to nine miles of drift or gap fencing to prevent wild horses from the Goshute and Spruce-Pequop designated management areas known as Herd Management Areas (HMA’s) from drifting back into these now declared horse free zones of checkerboard public and private lands.

Source: http://www.blm.gov/pgdata/etc/medialib/blm/nv/field_offices/elko_field_office/programs/planning/wells_planning.Par.38506.File.dat/Approved%20Wild%20Horse%20Amendment.pdf

It is currently unknown to what extent BLM was able to remove wild horses from the Toano Herd Area after this decision was issued or if the fencing identified as necessary to prevent “northern drift” from Goshute Valley was ever installed.

However, according to BLM Nevada Herd Statistics published for Fiscal Year 2009, BLM reported the Toana Herd Area as still having an approximate population of 168 wild horses identified in the area as of February 28, 2009.

Source: http://www.blm.gov/pgdata/etc/medialib/blm/wo/Planning_and_Renewable_Resources/wild_horses_and_burros/statistics_and_maps/fy_2009_ha_hma_final.Par.6745.File.dat/2009HAHMA2009statsnoAMFinalLaphalist.pdf

Based on the geographical coordinates provided in the Wells Wild Horse Amendment, the Toano Herd Area was identified as slightly above T34N beginning north of Interstate 80 and extended to slightly below T38N.

Recent records and maps provided through the BLM Geocommunicator System report the Toano Herd Area is located between 35N 68E and 38N 68E totaling 67,648.139 acres.

However, there appears to be some disagreement between the actual Herd Area acreage within BLMs own reports.

According to BLM records for 2009, the Toano Herd Area is comprised of approximately 43,811 acres of public lands and 23,869 acres of non-BLM managed lands totaling 67,680.

However, according to BLM records released in 2004, the Toano Herd Area was reported at 30,240 acres of public lands and 63,517 acres of other, most of which was comprised of private parcels located in checkerboard patterns lands totaling 93,757 acres.

BLM 2009 Herd Statistics

Source: http://www.blm.gov/pgdata/etc/medialib/blm/wo/Planning_and_Renewable_Resources/wild_horses_and_burros/statistics_and_maps/fy_2009_ha_hma_final.Par.6745.File.dat/2009HAHMA2009statsnoAMFinalLaphalist.pdf

HERD AREAS (HAs) - AREAS NOT MANAGED FOR WILD HORSES AND BURROS							
HERD AREA NAME	Herd Code	HERD AREA		Acres Transferred from BLM	Estimated Horse Pop	Estimated Burro Pop	Last Gather Mo/Year
		BLM Acres	Other Acres				
MONTE CRISTO**	NV0402	372,653	5,610	0	0	0	Jan-06
MORIAH**	NV0413	43,375	0	0	50	0	Oct-07
MORMON MOUNTAINS	NV0512	136,558	430	0	0	0	Jan-98
MOUNT AIRY	NV0695	64,801	2,772	0	20	0	
MOUNT POTOSI (in NV0525)	NV0506	Never designated		0	0	0	
MOUNT STERLING (in NV0510)	NV0508	33,865	554	34,095	0	0	Mar-99
MURPHYS WASH	NV0452	171,084	842	77,085	0	0	
NORTH CHERRY CREEK (in NV0105 & NV0107)	NV0106	0	0	0	0	0	Dec-96
NORTH SHOSHONE	NV0697	102,888	72,247	0	0	0	
OSGOOD MOUNTAINS	NV0202	87,394	54,728	0	0	0	
PAH RAH MOUNTAINS	NV0304	11,513	12,009	0	0	0	Aug-85
PARK MOUNTAIN	NV0694	32,255	59	6,623	0	0	
PATTERSON-EAGLE (in NV0404)	NV0492	0	0	0	0	0	
POWELL MOUNTAIN*	NV0318	26,705	3,366	30,071	0	0	
QUINN***	NV0696	103,973	1,735	0	0	0	
RATTLESNAKE	NV0523	71,433	0	71,433	0	0	Dec-06
SAND SPRINGS EAST	NV0405	481,220	505	0	0	0	Feb-06
SHELL CREEK (in NV0401)	NV0490	0	0	0	0	0	
SEAMAN RANGE	NV0411	359,351	1,884	0	152	0	Sep-96
SELENITE RANGE	NV0212	122,630	2,676	0	0	1	Dec-05
SLUMBERING HILLS	NV0205	46,008	447	0	0	0	
SMITH CREEK (in NV0606)	NV0688	0	0	0	0	0	
SONOMA RANGE	NV0223	150,099	62,490	0	0	0	Apr-87
SOUTH PANCAKE	NV0692	75,109	0	0	0	0	
SOUTH SLUMBERING HILLS	NV0230	15,797	14,299	0	0	0	Dec-85
SPRING MOUNTAIN (in NV0504 & NV0507)	NV0525	342,123	14,469	222,671	0	0	
TOANO	NV0110	43,811	23,869	0	168	0	Oct-93
TRINITY RANGE	NV0232	105,759	55,698	0	0	0	Dec-05
TRUCKEE RANGE	NV0213	93,318	77,752	0	0	0	
TULE RIDGE/MAHOGANY FLAT	NV0319	4,176	228	0	0	0	
UPPER HOT CREEK	NV0693	88,134	1,062	21,951	0	0	
WHITE RIVER	NV0409	118,633	0	0	140	0	Feb-05
WILLOW CREEK (in NV0618)	NV0699	0	0	0	0	0	
WILSON CREEK	NV0404	0	0	0	0	0	Feb-07
OUTSIDE OF HERD AREAS	NV000Z	0	0	0	57	15	Aug-07
TOTAL		7,303,272	1,017,467	467,715	963	31	
MONITOR (All claimed - not mapped)	NV0617						

Never designated - Managed as interim HMAs within Spring Mountain HA.
4. Murphys Wash became a BLM HA with the White Pine Land Exchange, 2007.

BLM 2004 Herd Statistics
No longer available on line.

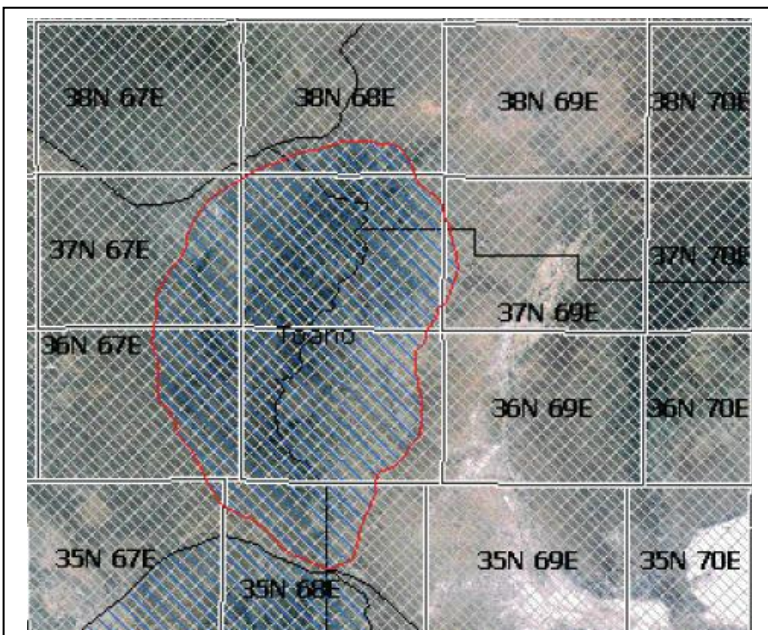
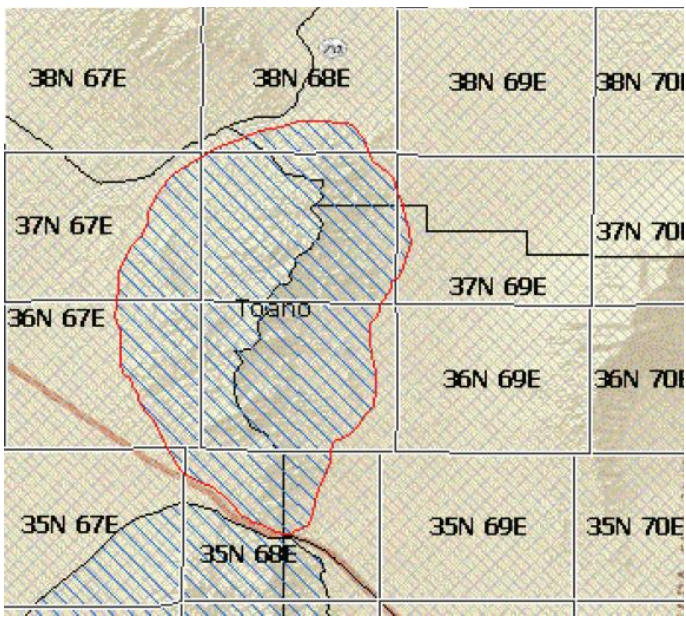
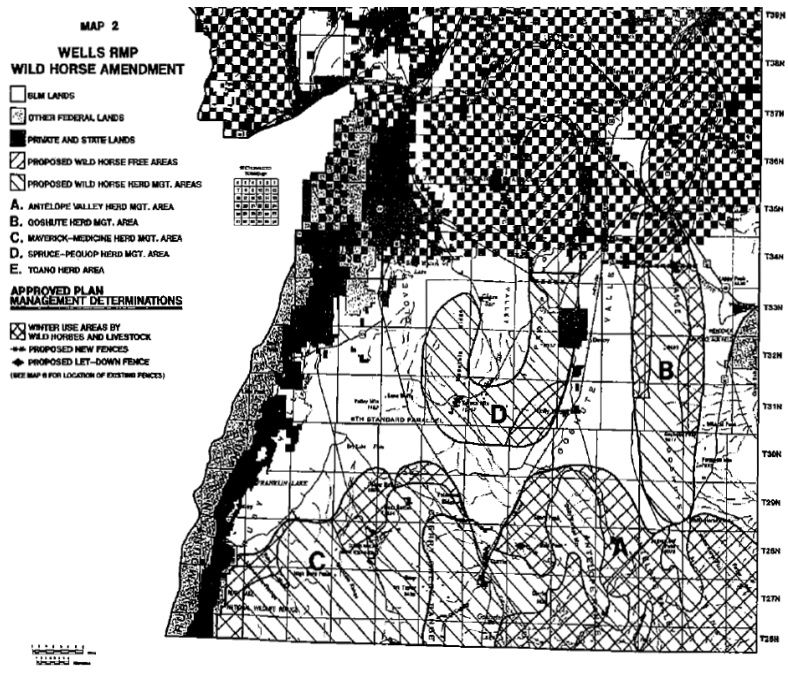
NEVADA WILD HORSE AND BURRO AREAS ADMINISTRATED BY THE BUREAU OF LAND MANAGEMENT										
HERD AREAS (HAs) - AREAS NOT MANAGED FOR WILD HORSES AND BURROS										
HERD AREA NAME	HERD CODE	HERD AREA		ESTIMATED HORSE POP	ESTIMATED BURRO POP					LAST GATHER MOYEAR
		BLM ACRES	OTHER ACRES							
SOUTH PANCAKE	NV0692	75,107	0	0	0					
SOUTH SLUMBERING HILLS	NV0230	15,906	26,429	0	0					Dec-85
TOANO	NV0110	30,240	63,517	14	0					Oct-93
TRINITY RANGE	NV0232	106,072	155,718	6	0					Aug-98
TRUCKEE RANGE	NV0213	93,237	149,139	0	0					
TULE RIDGE-MAHOGANY FLAT	NV0319									
UPPER HOT CREEK*	NV0615	88,957	456	0	0					
OUTSIDE OF HERD AREAS	NV000Z	0	0	200	36					Jan-03
HAs included in HMAs										
KOBEH VALLEY includes NV608	NV0698	91,083	2,528							
LAST CHANCE included in NV51	NV0527	138,512	23,457							
MOUNT STERLING included in N	NV0528	43,423	28,344							Mar-95
SPRING MOUNTAIN-Includes NV	NV0525	552,893	215,678							
MONITOR-All claimed	NV0617									
TOTAL		3,055,979	2,105,742	386	150					
AUSTIN included in NV0604	NV0687									
BLUE DIAMOND included in NV0	NV0505	never desiganted								
CAVE VALLEY included in NV04	NV0493									
DUNLAP-Included in NV314	NV0690									
FORTIFICATION included in NV0	NV0496									
GABBS VALLEY RANGE-Include	NV0315									Nov-87
GOLDEN GATE included in NV04	NV0494									
GOSHUTE included in NV0401	NV0495									
GRASS VALLEY included in NV0	NV0689									
LUCKY STRIKE included in NV05	NV0526	never desiganted								
MAVRICK-BUTTE included in NV	NV0491									
MT POTOSI included in NV0507	NV0506	never desiganted								
NORTH CHERRY CREEK-Includ	NV0106									Dec-96
PATTERSON-EAGLE included in	NV0492									
POWELL MOUNTAIN*	NV0318	Transferred to FS								
SCHELL CREEK included in NV0	NV0490									
SMITH CREEK included in NV06	NV0688									
WILLOW CREEK included in NV6	NV0699									

Based on BLM 2004 and 2009 acreage reports, 26,077 Herd Area acres disappeared from the records between these two reporting dates indicating acreage reports may have been recently tampered with to exclude the large amount of private acreage wild horses had been found on in 1971, which was still being identified in BLM's 2004 reports.

This might also indicate the original Toano Herd Area extended much deeper into Pilot Valley than BLM is now reporting. To further support this theory of a larger Herd Area extending into private parcels, Pilot Creek runs through the entire length of Pilot Valley, which most likely would have been a major source of water for wild herds in the area.

The map to the right was taken from the Wells RMP Wild Horse Amendment BLM and was used to illustrate those areas that were deemed not suitable for long-term management of wild horses, including the Toano Herd Area.

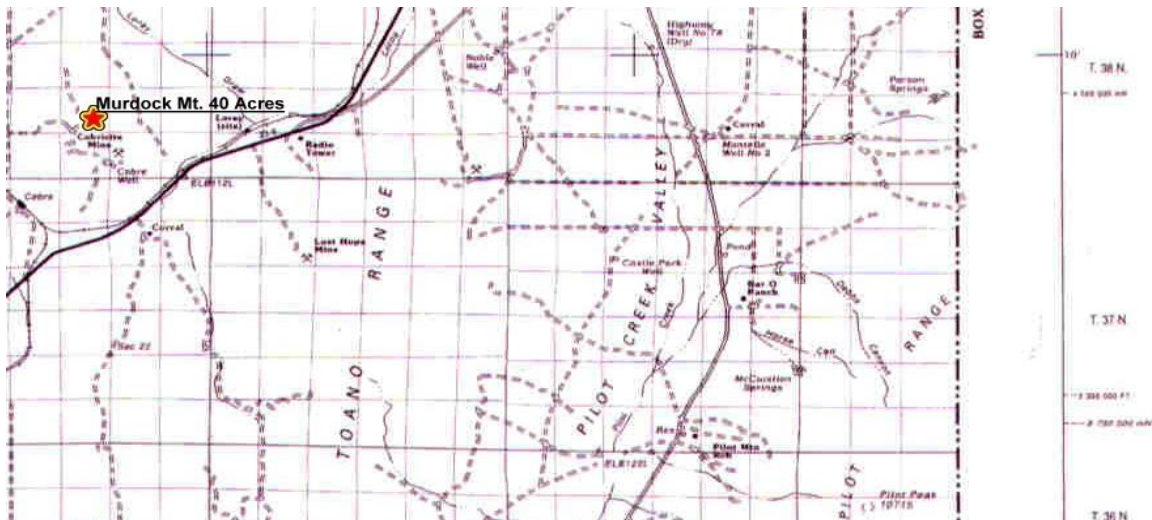
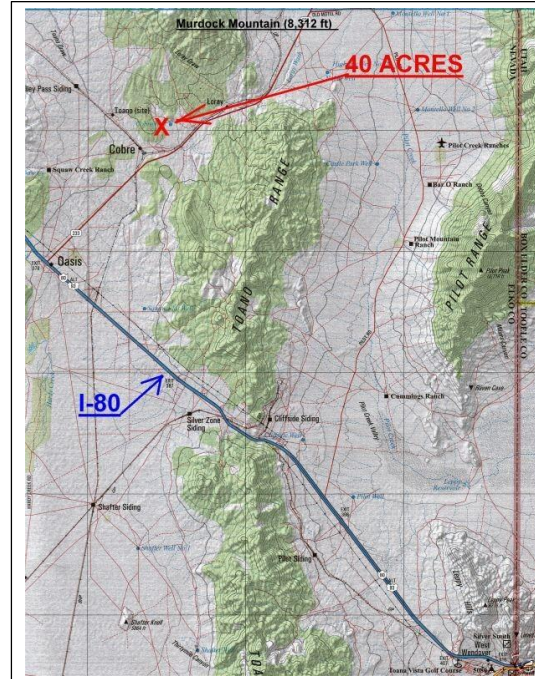
The maps provided below illustrating the Toano Herd Area was taken from the BLM Geocommunicator website updated as of 6-28-10. However, BLM does issues a disclaimer as to the accuracy of this information.



The map to the right was found online regarding the sale of approximately 40 acres of land near Interstate 80 and close to the Nevada/Utah border. This specific piece of property was listed as having the geographic coordinates of Section 27 Township 38N Range 67E MDB&M.

The map below was taken from a general map of Elko county regarding the Pilot Valley area.

Based on this map, Pilot Valley's geographic coordinates range from T36N to slightly above T38N, within a few miles of the same geographic range as BLM listed for the Toano Herd Area north of Interstate 80.



Map sources:

<http://webcache.googleusercontent.com/search?q=cache:Nmizu-n2xuAJ:1stcapitalsolutions.com/montello.htm+Toana+Herd+Area+Map&cd=1&hl=en&ct=clnk&gl=us>

In addition to these maps, the following description of the sale property was included:

“This is a pristine 40 acre parcel of land in Elko County, Nevada. This land is just 9 miles north of I-80, 33 miles from Wendover, Nevada & 30 miles from Wells, Nevada and 12 miles south of Montello, Nevada. The parcel is nestled at the north end of the Goshute Valley, between the Pilot Peak Range to the east and the Toano Range to the south and right at the base of Murdock Mountain. The area affords a perfect habitat for abundant wildlife.”

It also provided numerous features and photos to highlight the properties advantages, one of which were wild mustangs roaming the area and wild herds in nearby Goshute Valley.

Titled: **“Wild Mustangs Roam Free In The Area”**



Titled **“Goshute Valley Wild Herd”**



The BLM reported 168 wild horses were still residing in the Toano Herd Area as of February 28, 2009, which is located in approximately the same geographical area as Pilot Valley.

Can BLM prove that approximately 200 wild horses still remain in the Toano Herd Area today?

And how did BLM distinguish the 175 horses located in Pilot Valley were separate and distinct from the protected wild horses they reported as inhabiting the Toano Herd Area a year ago?